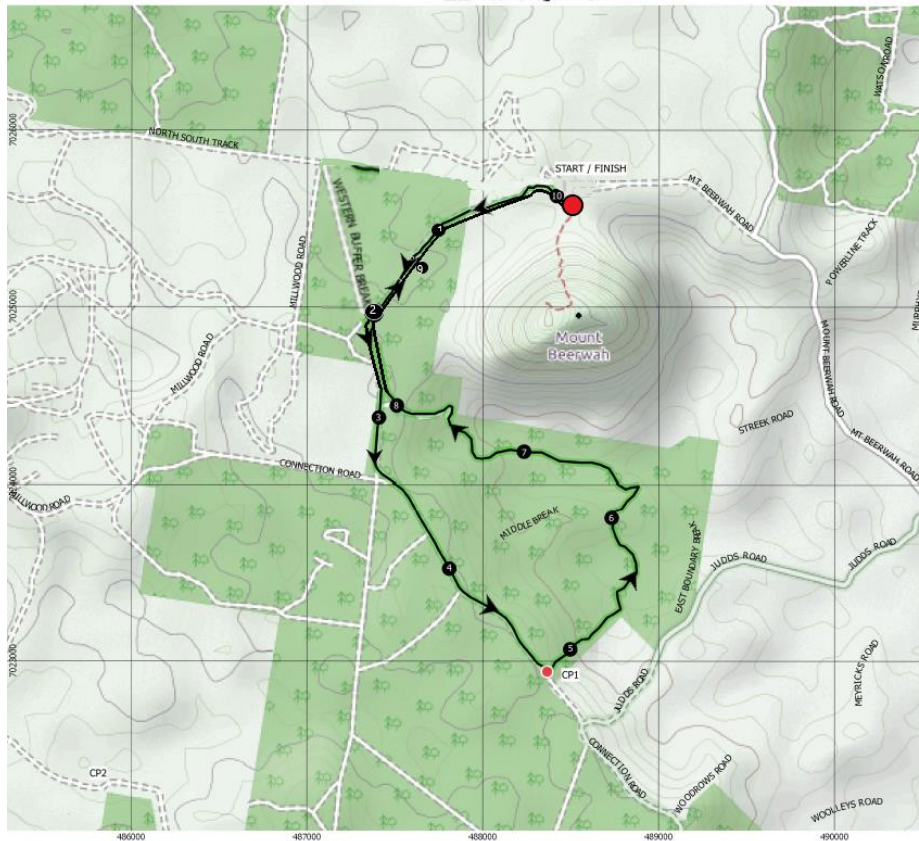


Beerwah@Night 10km

Starting from the National Park Day Use area, follow the trail until you come out under the power lines. Follow the signage and veer left onto the forestry road. Continue along this road until you come to CP1 before dropping into 'The Dungeon'. Emerging from the last climb out of the bush, veer right and head for home, returning on the route you headed out on, back to the finish.

Leg	Details	Distance	Cumulative
1	START – CP1	4.8km	4.8km
2	CP1 – Start/Finish	5.5km	10.3km

10k

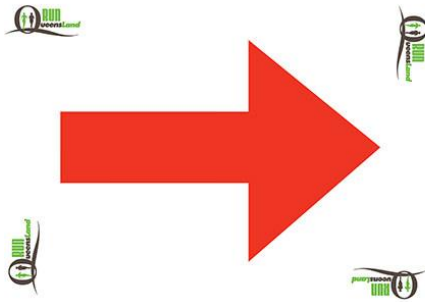


Legend

- Start / Finish
- Cumulative Distance
- Check Point
- 10k Course

COURSE OVERVIEW





COURSE MARKINGS

The course will be marked

- Red arrows secured to trees
- Crosses marked on trees indicating this is not the course.
- Orange flagging tape.

There will also be additional signage where necessary, at key intersections.